

# Molded Case Circuit Breakers [ MCCB ]



## Features

---

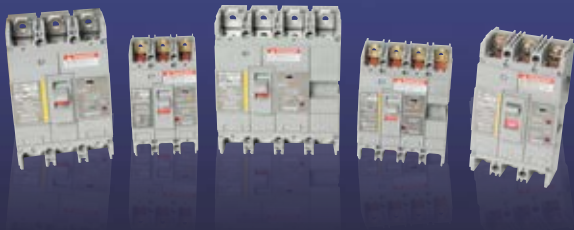
- Rated current : 15 ~ 800A
- Both old and new products are compatible for attachment
- Standardized dimension(height : 60mm)
  - > easy to make panel board
- Improvement of capacity – 65kA at AC460V  
(high interrupting capacity type)
- CE,TUV,KR,KS



**DONGA<sup>®</sup> ELECTRIC DEVICE CO.,LTD.**

Made in Korea

# Earth Leakage Circuit Breakers [ ELCB ]



## Features

---

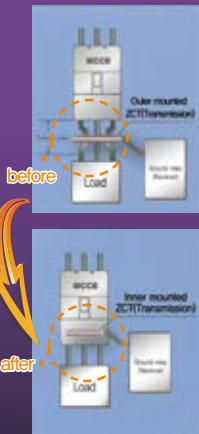
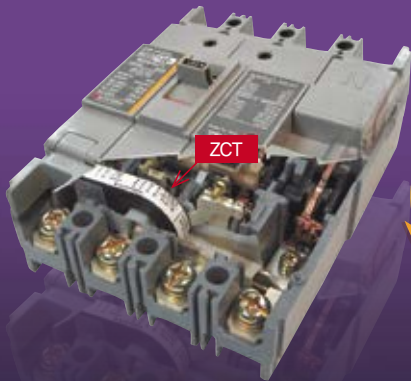
- Frame size : 30 ~ 400AF
- Same size between MCCB and ELCB(Standardized dimension)
- Mark current leakage on the current leakage window
  - normal state: green on the window
  - leakage trip state: yellow on the window
- Improved insulation capacity
  - 65kA at AC460V (high-insulation)
- CE,TUV,KR,KS



**DONGA<sup>®</sup> ELECTRIC DEVICE CO.,LTD.**

Made in Korea

# Zero Current Transformer MCCB [ ZCT Embedded MCCB ]



## Features

- Detect range : 0 ~ 1,000m
- Output value average errors  $\pm 5\%$
- Function like ELCB(Individual line management) when attached auxiliary(Trip unit)
- Compact panel inducement



**DONGA<sup>®</sup> ELECTRIC DEVICE CO.,LTD.**

Made in Korea

# Home Panel Board



## Features

---

- Optimal for house branch circuit.
- Wide range for choice according to the diversification of rated current
- Excellent breaking performance by embedding the solenoid of current-limit structure (6kA at 220V)



**DONGA<sup>®</sup> ELECTRIC DEVICE CO.,LTD.**

Made in Korea

# Magnetic Contactors

## [ MC ]



### Features

---

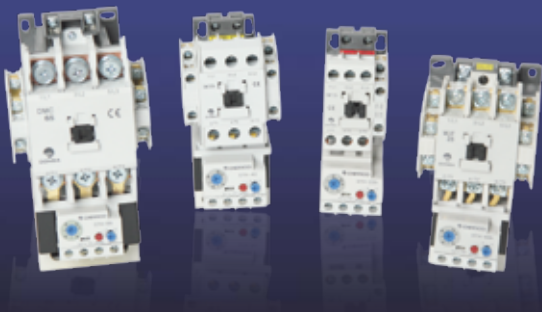
- Rated current : 9~220A
- Compatibility between old and new model
- Quality stabilization by AC controlling DC excitation system for voltage dip(DMC100~220)
- Publication and modularization
- Vibration free in high moisture circumstance such as a boiler
- CE, TUV, KR



**DONGA<sup>®</sup> ELECTRIC DEVICE CO.,LTD.**

Made in Korea

# Magnetic Switches [ MS ]



## Features

---

- Rated current : 9~220A
- Compatibility between old and new model
- Quality stabilization by AC controlling DC excitation system for voltage dip
- Publication and modularization
- CE, TUV, KR



**DONGA<sup>®</sup> ELECTRIC DEVICE CO.,LTD.**

Made in Korea

# Thermal Overload Relay [ DTH ]



## Features

---

- Mechanism ass'y (1a1b type)
- Overlap prevented mechanism ass'y
- Automatic comeback certain time after trip  
(Auto/Manual Controllable)
- Available emergency stop & trip free
- Open phase protection(Optional)



**DONGA<sup>®</sup> ELECTRIC DEVICE CO.,LTD.**

Made in Korea

# Air Circuit Breakers [ ACB ]



## Features

---

- Rated current : 630 ~ 4000A
- Improvement of capacity - 85Ka at AC460V  
(High interrupting capacity type)
- Diversification

Diversification is given to set circuit breaking condition including electric current in a long time delay, in a short time delay, in an instantaneous trip and in ground fault. This provides a variety of choices satisfaction of detailed needs.



**DONGA<sup>®</sup> ELECTRIC DEVICE CO.,LTD.**

Made in Korea



# Auto Transfer Switches [ ATS ]



## TS, TN Type Functions and Features

---

- Has an ample current flow capability  
Temperature rising value is low because the main contact has been specifically designed according to standard process.

## MS, MSN Type Functions and Features

---

- The unit is designed to eliminate frequent defective works by effectively operating a grounding failure protection device.
- Error signals make it available to check with closing and breaking operation.



**DONGA<sup>®</sup> ELECTRIC DEVICE CO.,LTD.**

Made in Korea

# Mini Circuit Breakers

## [ MCB : BK6 □ ]



### Features

---

- Rated current : 1 ~ 63A
- Number of pole : 1, 2, 3, 4
- Improvement of capacity - 6Ka at 230V/400V
- Suitable for electric apparatus and lighting circuit
- IEC60898
- Electronical Life : 4000 times
- Mechanical Life : 10000 times



**DONGA<sup>®</sup> ELECTRIC DEVICE CO., LTD.**

Made in Korea

# Company History

- **1955.04 Established Company**
- 1977. 12 Corporation Establishment
- 1984. 03 Acquired KR Mark by Korea Register of Shipping
- 1985. 10 Acquired KS 4613/8321 Mark
- 1997. 04 Acquired ISO 9001
- 1999. 09 Established R&D Institute  
Designated as the Exporting Corporation by KOTRA
- 2000. 03 Acquired VDE(Germany) Certificate (MUF20C)
- 2001. 09 Acquired CCC Certificate (MUF20CA, MUF20CE)
- 2002. 07 Acquired Electromagnetic Switch CE/TUV Certificate (DMC12~85, HRD010~075)
- 2002. 07 Acquired CE Certificate (DMC12~85, HRD010~075, DMS12~85)
- 2004. 04 Acquired Excellent Quality Certificate (EM MARK)
- 2004. 09 Awarded the Prime Minister Award at Electricity Safety Promotion Contest, Hosted by Korea Electrical Safety Corporation
- 2005. 08 Acquired Affiliated R&D Institute Certificate
- 2005. 11 Awarded MOCIE Award in Relation to Completion of 220V Voltage Booster Project
- 2005. 11 Awarded MOCIE Award in Relation to Development of New Technology and Implementation of Developed Technology
- 2005. 11 Acquired INNO-BIZ Certificate
- 2006. 06 Acquired Excellent Product Certificate for ZCT Built-in MCCB
- 2007. 05 Acquired ZCT Built-in MCCB NEP
- 2008. 10 Acquired Certificate (MCCB) by Korea Electrical Safety Corporation
- 2010. 08 Acquired CE Mark of all product (TUV Company in German)
- 2013. 06 Acquired KS Mark (Household Panel Board)
- 2014. 06 Merger and acquisition with seoil

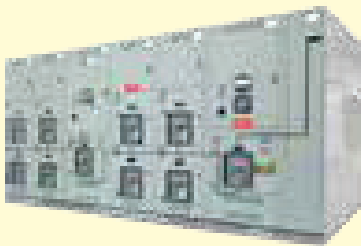


**DONGA<sup>®</sup> ELECTRIC DEVICE CO.,LTD.**

Made in Korea



**Dealer**



## **LV Products**

Made in : Italy

Using Field: Industries

# SIEMENS

## Agent



Motor & Building Automation Products

Made in : Germany/USA/UK/China

Using Field: Industries

**Agent**



## **Generator**

Capacity (Stand by) :30kVA – 2260kVA

Made in : European Union



**Sole  
Distributor**



## **| Sensor**

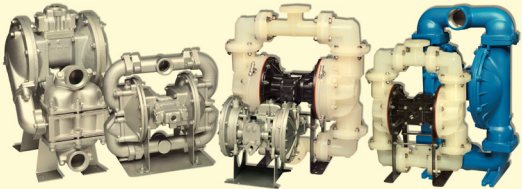
Made in : Italy

Using Field: Industries

# **WARREN RUPP**

(Sand Piper II)

**Agent**



## **Pump**

Made in : USA

Using Field: Heavy Industries





**Dealer**

## **Building Automation Products**

Made in : France/China

Using Field: Industries

# PP (Plastic Cartoon/Box)

**Sole  
Distributor**

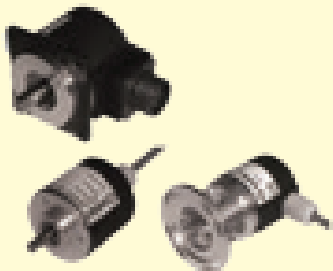


Made in : China

Using Field: Garments, Medicine, Food etc.



**Sole  
Distributor**



## **| Encoder**

Made in : Italy

Using Field: Industries



**Sole  
Distributor**



## **Exhaust Fan**

Made in : UK

Using Field: Industries



迪卡手推车  
DIKA TROLLEY

**Sole  
Distributor**



## ■ Shopping Cart (Trolley)

Made in : China

Using Field: Departmental Store & Garments Factory.

# Bangla Tech

## OFFICE

**Taufiq Electric Market** (2nd Floor), 136 Nawabpur Road, Dhaka-1100. Bangladesh.

**Phone:** 02- 9512013-4

## SHOW ROOM

**C-16/17, Ibrahim Electric & Electronics Market**, 124 B.C.C Road, Nawabpur, Dhaka-1100. Bangladesh. **Phone:** 02-9584625, 9583526-7, 9512012

**Fax:** +880-02-9512015

**Web:** [www.banglatech-bd.com](http://www.banglatech-bd.com)

**E-mail:** [Iqbal011966@yahoo.com](mailto:Iqbal011966@yahoo.com), [info@banglatech-bd.com](mailto:info@banglatech-bd.com)